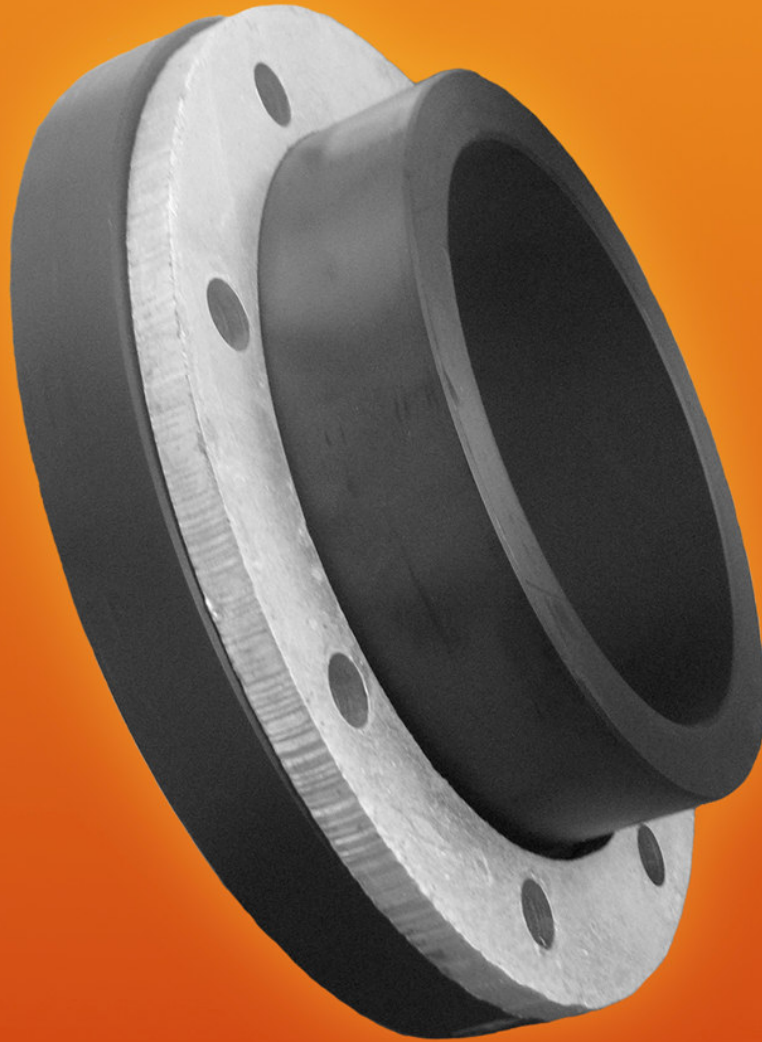




**Rodney Industries**

A Division of Vinidex Pty Ltd



**MAXI** stub

**MAXI**BORE **MAXI**STRENGTH **MAXI**SEALING  
*SIZE FOR SIZE*

# MAXIstub

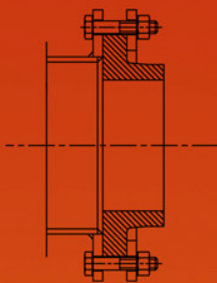
The MaxiStub is a Polyethylene (PE) flange system that is full faced with a full nominal bore.

The MaxiStub was developed so that the flange size and the nominal bore of PE pipes could be closely matched to other pipe materials at higher PN Ratings.

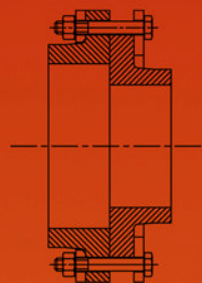
Originally developed for municipal requirements (PN16 pipes), the flange system is now standard on the range of Rodney Industries' Poly Footvalves, Leaf and Lint Strainers and is appearing on more and more Suction Lines, addressing the bore size issues so critical to flow velocities.

MaxiStub enables PE to be specified easily with PVC, Steel or Ductile Pipe flanges.

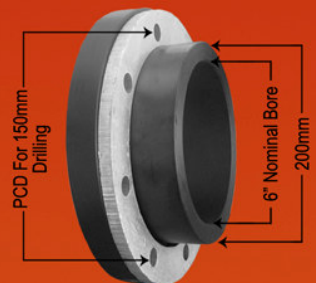
Example: A PN16 Poly pipe with an ID of 150mm should be available with a 150mm flange... not a 200mm flange.



Steel Flange to Conventional Poly Stub Flange and Backing Ring (Table D)



MaxiStub Flange & Backing Ring to Conventional Poly Stub Flange & Backing Ring (Table D)



200mm PE to 6" Maxi/Flange Complete

- Full nominal bore at high pressure ratings on any flange size
- No spacers required for butterfly valve function
- Full sealing face with full backing flange support
- No deformation of stubs or backing rings
- Full face support offers other backing ring options eg. Polycarbonate
- MaxiStub assembly includes dedicated Backing Ring
- Backing rings captive by welds
- Standard pressure rating of PN16/SDR11 up to 375mm available; others available on request.
- Suitable for buttwelding or electrofusion

## MAXI STUB GUIDE

| Flange vs Nominal Bore Size |     | Polyethylene Pipe Sizes to suit MAXI Stub |       | Standard Reference of Typical Pipes ie. PVC S1&S2, Steel, Ductile |
|-----------------------------|-----|---|-------|---|
| inches                      | mm  | SDR17                                     | SDR11 |   |
| 2"                          | 50  | 63  | 75    | 50  |
| 2½"                         | 65  | 75  | 90    | 65  |
| 3"                          | 80  | 90  | 110   | 80  |
| 4"                          | 100 | 125                                       | 140   | 100   |
| 5"                          | 125 | 140                                       | 160   | 125   |
| 6"                          | 150 | 180                                       | 200   | 150   |
| 8"                          | 200 | 225                                       | 250   | 200   |
| 9"                          | 225 | 250                                       | 280   | 225   |
| 10"                         | 250 | 280                                       | 315   | 250   |
| 12"                         | 300 | 355                                       | 355   | 300   |
| 14"                         | 350 | 400                                       | -     | 350   |
| 15"                         | 375 | 450                                       | 450   | 375   |
| 16"                         | 400 | 450                                       | -     | 400   |
| 18"                         | 450 | 500                                       | -     | 450   |
| 20"                         | 500 | 560                                       | -     | 500   |
| 22"                         | 525 | 631                                       | -     |   |
| 24"                         | 600 | 710                                       | -     | 600   |
| 30"                         | 750 | 800                                       | -     | 750   |
| 32"                         | 800 | 900                                       | -     | 900   |
| 36"                         | 900 | 1000                                      | -     | -   |

