



Rodney Industries

APRIL 2024

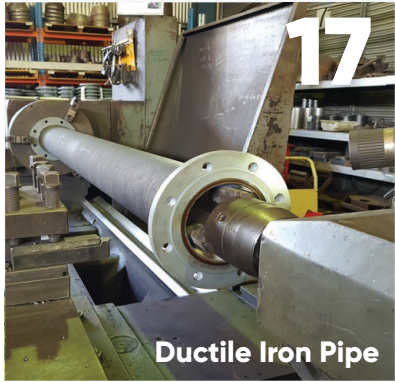
SEWER & CIVIL FITTINGS





**REAL PEOPLE
REAL PRODUCTS
REAL SOLUTIONS**

TABLE OF CONTENTS



SEWERTECH

SEWERTECH

SEWERTECH

Sewertech is dual wall co-extruded black over light grey high density polyethylene pipe and is the latest combination of raw materials and pipeline design technology. It is the first-ever purpose built pipe for pipe bursting and slip lining applications and is designed specifically for the waste-water industry, making it most suitable for gravity sewerage and drainage applications.

The black external layer provides high scratch and UV resistance, while the light coloured internal layer provides good reflection properties for manual and video inspection purposes.



BENEFITS

- High tensile strength to withstand installation forces
- Low friction external surface for ease of insertion
- Low friction internal surface for hydraulic efficiency and low residual slime growth
- Scratch and ultra-violet resistant external PE layer
- Can be installed by slip lining, pipe bursting, directional drilling or direct burial
- Zero joint infiltration, zero root penetration.

JOINTING

Sewertech can be joined by butt-fusion and electrofusion welding using standard PE jointing equipment and electrofusion fittings.

COMPATIBILITY

Sewertech is compatible with all standard PE sewer fittings and is suitable for use with a wide range of off the shelf couplings, 45° saddles and various angle bends. Property connections can be made easily using standard saddles or junctions.

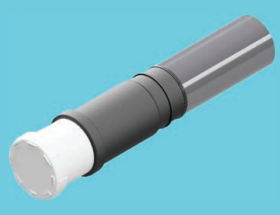
PIPE SPECS

Nom Dia. DN (mm)	Mean Outside Diameter		Wall Thickness SDR21	
	Min.	Max	Min.	Max
160	160	161.5	7.7	8.6
180	180	181.7	8.6	9.6
250	250	252.3	11.9	13.2
315	315	317.9	15	16.6





THE RANGE



PE Adaptor & PVC Socket and Cap



380mm Radius Sweep Bend 45°



480mm Radius Sweep Bend 90°



750mm Radius Sweep Bend 15°



750mm Radius Sweep Bend 30°



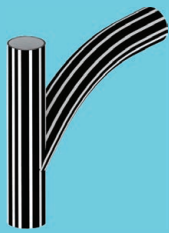
750mm Radius Sweep Bend 45°



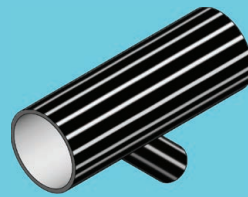
750mm Radius Sweep Bend 90°



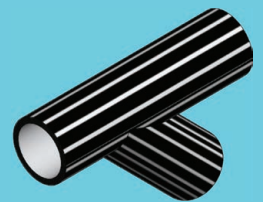
90° Sweep Junctions Reducing



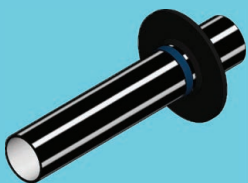
90° Sweep Junctions Equal



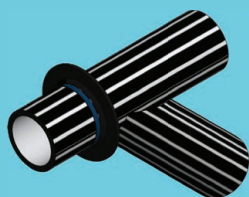
45° Junctions Reducing



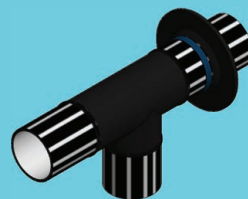
45° Junctions Equal



Spigot fitted with Hydrophilic Seal



External 45° Backdrop Junction with Seal

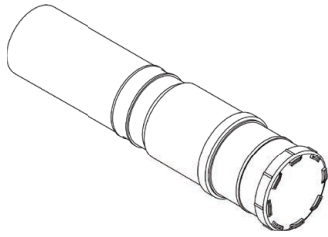


External 90° Backdrop Junction with Seal



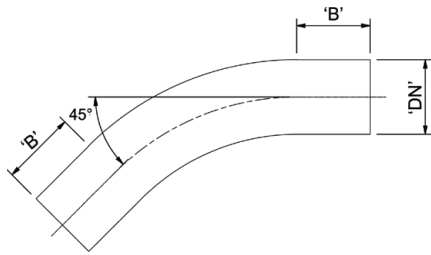
External Backdrop Bend with Seal

SEWERTECH



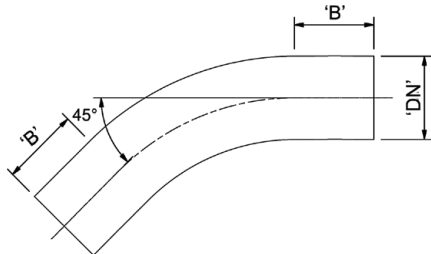
PE Adaptor & PVC Socket and Cap

Code	PE Size (mm)	PVC Size (mm)	Price
PEADPVC110	110	100	107.70
PEADPVC160	160	150	115.20



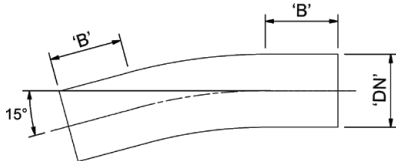
SewerTech® 380mm Radius Sweep Bends 45°

Code	Nom Dia. DN (mm)	Dim. (mm) 'B' (min.)	Price
STSW11045380R	110	110	133.40
STSW11030380R	110	110	130.50
STSW11090380R	110	110	136.50



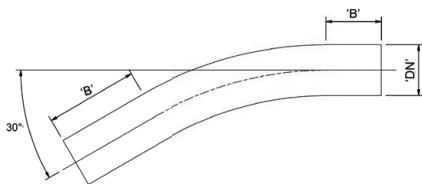
SewerTech® 480mm Radius Sweep Bends 45°

Code	Nom Dia. DN (mm)	Dim. (mm) 'B' (min.)	Price
STSW16045480R	160	160	147.20
STSW16090480R	160	160	164.50



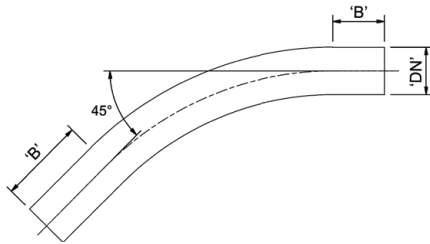
SewerTech® 750mm Radius Sweep Bends 15°

Code	Nom Dia. DN (mm)	Dim. (mm) 'B' (min.)	Price
STSW11015750R	110	110	94.10
STSW16015750R	160	160	154.80



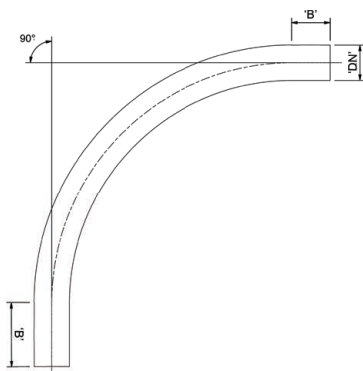
SewerTech® 750mm Radius Sweep Bends 30°

Code	Nom Dia. DN (mm)	Dim. (mm) 'B' (min.)	Price
STSW11030750R	110	110	98.90
STSW16030750R	160	160	160.80



SewerTech® 750mm Radius Sweep Bends 45°

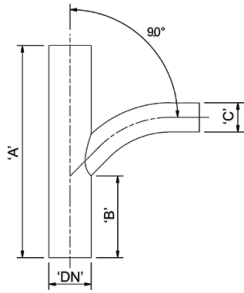
Code	Nom Dia. DN (mm)	Dim. (mm) 'B' (min.)	Price
STSW11045750R	110	110	127.20
STSW16045750R	160	160	168.30



SewerTech® 750mm Radius Sweep Bends 90°

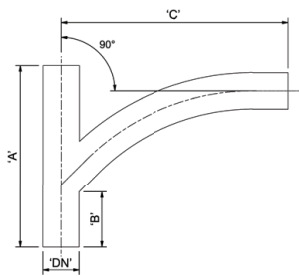
Code	Nom Dia. DN (mm)	Dim. (mm) 'B' (min.)	Price
STSW11090750R	110	110	142.70
STSW16090750R	160	160	195.80

SEWERTECH



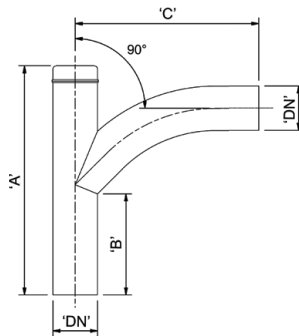
SewerTech® 90° Sweep Junctions Reducing

Code	Nom Dia. DN (mm)	Dim. (mm) 'A'	Dim. (mm) 'B'	Dim. (mm) 'C'	Price
STSJR16011090	160	600	310	110	298.90
STSJR25011090	250	800	310	110	345.90
STSJR25016090	250	800	310	160	359.70



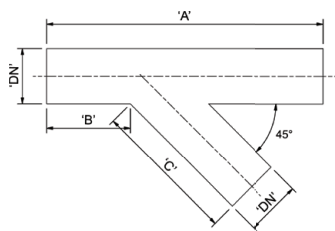
SewerTech® 90° Sweep Junctions Equal

Code	Nom Dia. DN (mm)	Dim. (mm) 'A'	Dim. (mm) 'B'	Dim. (mm) 'C'	Price
STSJE11090	110	540	252	455	277.60
STSJE16090	160	800	242	1000	368.70



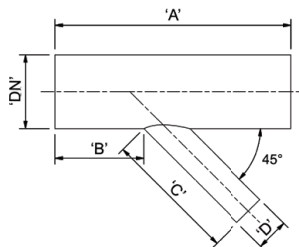
SewerTech® 90° Sweep Junctions Equal c/w low pressure end cap butt welded

Code	Nom Dia. DN (mm)	Dim. (mm) 'A'	Dim. (mm) 'B'	Dim. (mm) 'C'	Price
STSJE11090CAP	110	569	252	455	341.40



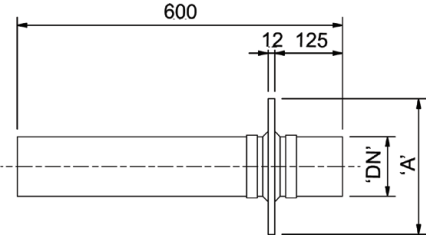
SewerTech® 45° Junctions Equal

Code	Nom Dia. DN (mm)	Dim. (mm) 'A'	Dim. (mm) 'B'	Dim. (mm) 'C'	Price
STJE11045	110	800	252	425	163.90
STJE16045	160	800	242	450	186.60



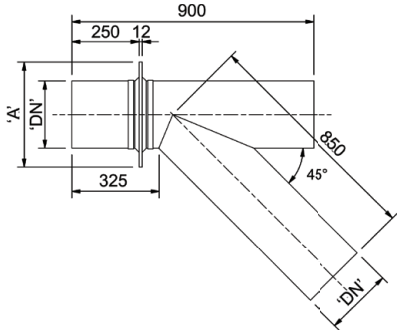
SewerTech® 45° Junctions Reducing

Code	Nom Dia. DN (mm)	Dim. (mm) 'A'	Dim. (mm) 'B'	Dim. (mm) 'C'	Dim. (mm) 'D'	Price
STJR16011045	160	800	275	440	110	177.60
STJR25011045	250	800	360	450	110	291.40
STJR25016045	250	800	360	550	160	341.40



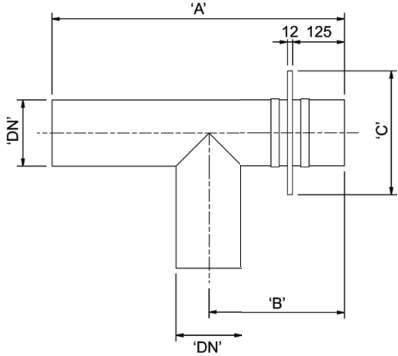
Puddle Flange MH Spigot

Code	Nom Dia. DN (mm)	Dim. (mm) 'A'	Price
PF110MHS250	110	250	144.20
PF160MHS300	160	300	189.60
PF250MHS390	250	390	330.70
PF315MHS455	315	455	452.20



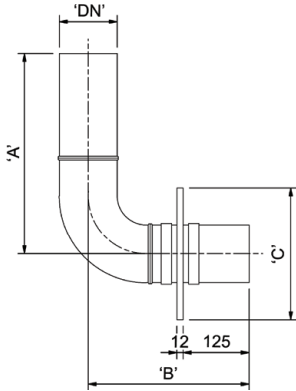
Puddle Flange External 45° Backdrop Junction

Code	Nom Dia. DN (mm)	Dim. (mm) 'A'	Price
PF160BJ45	160	300	371.70
PF250BJ45	250	390	996.90



Puddle Flange External 90° Backdrop Junction

Code	Nom Dia. DN (mm)	Dim. (mm) 'A'	Dim. (mm) 'B'	Dim. (mm) 'C'	Price
PF110BJ90	110	685	305	250	151.70
PF160BJ90	160	710	330	300	285.30
PF250BJ90	250	780	470	390	663.10
PF315BJ90	315	938	580	455	837.60



Puddle Flange Backdrop Bend

Code	Nom Dia. DN (mm)	Dim. (mm) 'A'	Dim. (mm) 'B'	Dim. (mm) 'C'	Price
PF110BB90	110	380	305	250	282.20
PF160BB90	160	380	330	300	424.90
PF250BB90	250	570	470	390	1,150.10
PF315BB90	315	580	580	455	1,939.20

STORMPRO

STORMPRO

STORMPRO

StormPRO pipes have a simple and effective rubber ring joint system which is easy to assemble, leak tight and protects against tree root intrusion. The rubber ring is located on the spigot in the last trough between the corrugations.

Vinidex PRO2 is a new jointing system designed for easier installation and leak tight joint performance. The PRO2 joint design uses a new redesigned rubber ring to match new socket geometry. Ensure that only PRO2 rubber rings are used with PRO2 sockets. PRO2 sockets can be identified by a label on the socket and PRO2 rubber rings can be identified by PRO2 marking on the ring.



BENEFITS

- Wide range of fittings available including Tees, Bends and Junctions.
- StormPRO® pipes are twin-wall, corrugated polypropylene pipes for non-pressure applications.
- Manufactured with a smooth bore for optimum hydraulic performance and a corrugated outside wall for high stiffness to weight ratio.
- Latest generation PRO2 Joints.
- Light weight.

THE RANGE



PRO Coupling



PRO Slip Coupling



PRO Push on Cap



PRO Bend 30°



PRO Bend 45°



PRO Bend 88°



PRO Equal Tee



PRO Reducing Tee



PRO Equal Junction 45°



PRO Equal Junction 88°



PRO Step Down Junction 45°



PRO Step Down Junction 88°

STORMPRO



PRO Coupling Polypropylene

Code	Size (mm)	Spigot	Price
SWPC450	450	FF	1,367.80
SWPC525	525	FF	1,759.70
SWPC600	600	FF	2,231.80



PRO Slip Coupling Polypropylene

Code	Size (mm)	Spigot	Price
PROSC450	450	FF	1,552.00
PROSC525	525	FF	1,857.00
PROSC600	600	FF	2,709.30
PROSC750*	750	-	3,994.10
PROSC900*	900	-	4,934.50

* Minimum order quantity is 3



PRO Push on Cap Polypropylene

Code	Size (mm)	Spigot	Price
SWPPOC450	450	F	1,482.20
SWPPOC525	525	F	1,303.30
SWPPOC600	600	F	1,759.70



PRO Bend 30° Polypropylene

Code	Size (mm)	Spigot	SN	Price
SWPB45030MF	450	MF	10	1,044.30
SWPB60030MF	600	MF	10	1,277.00



PRO Bend 45° Polypropylene

Code	Size (mm)	Spigot	SN	Price
SWPB45045MF	450	MF	10	1,525.50
SWPB52545MF	525	MF	10	2,725.20
SWPB60045MF	600	MF	10	1,758.30
SWPB75045MF	750	MF	10	2,755.30
SWPB90045MF	900	MF	10	4,342.60



PRO Bend 88° Polypropylene

Code	Size (mm)	Spigot	SN	Price
SWPB45088MF	450	MF	10	1,525.50
SWPB52588MF	525	MF	10	1,680.80
SWPB60088MF	600	MF	10	1,917.50
SWPB75088MF	750	MF	10	3,397.10
SWPB90088MF	900	MF	10	6,745.50

STORMPRO



PRO Equal Tee Polypropylene

Code	Size (mm)	Spigot	SN	Price
SWPET450MFF	450	MFF	10	3,048.60
SWPET525MFF	525	MFF	10	2,863.60
SWPET600MFF	600	MFF	10	2,956.10
SWPET750MFF	750	MFF	10	9,668.80
SWPET900MFF	900	MFF	10	9,196.80



PRO Reducing Tee Polypropylene

Code	Size (mm)	Size (mm)	Spigot	SN	Price
SWPRT450150MF	450	150	MF	10	1,924.10
SWPRT450225MF	450	225	MF	10	2,002.50
SWPRT450300MF	450	300	MF	10	2,253.40
SWPRT450375MF	450	375	MF	10	2,343.60





PRO Equal Junction 45° Polypropylene

Code	Size (mm)	Spigot	SN	Price
SWPEJ45045MFF	450	MFF	10	3,033.50
SWPEJ52545MFF	525	MFF	10	2,802.60
SWPEJ60045MFF	600	MFF	10	4,313.80
SWPEJ75045MFF	750	MFF	10	6,563.50
SWPEJ90045MFF	900	MFF	10	10,867.50



PRO Equal Junction 88° Polypropylene

Code	Size (mm)	Spigot	SN	Price
SWPEJ45088MFF	450	MFF	10	3,232.20
SWPEJ52588MFF	525	MFF	10	3,360.10
SWPEJ60088MFF	600	MFF	10	4,795.10
SWPEJ75088MFF	750	MFF	10	8,425.80



PRO Step Down Junction 45° Polypropylene

Code	Size (mm)	Size (mm)	Spigot	SN	Price
SWPSDJ45015045MFF	450	150	MF	10	2,545.60
SWPSDJ45022545MF	450	225	MF	10	2,415.90
SWPSDJ45030045MFF	450	300	MF	10	2,822.40
SWPSDJ45037545MF	450	375	MF	10	2,663.30



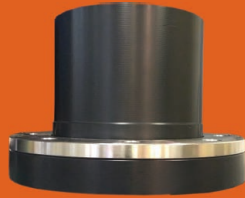
PRO Step Down Junction 88° Polypropylene

Code	Size (mm)	Size (mm)	Spigot	SN	Price
SWPSDJ45015088MFF	450	150	MF	10	2,807.90
SWPSDJ45022588MF	450	225	MF	10	2,947.20
SWPSDJ45030088MF	450	300	MF	10	3,372.10
SWPSDJ45037588MFF	450	375	MF	10	3,952.70

MAXI STUBS

MAXI STUBS

MAXI STUBS



The MaxiStub is a Polyethylene (PE) flange system that is full faced with a full nominal bore.

The MaxiStub was developed so that the flange size and the nominal bore of PE pipes could be closely matched to other pipe materials at higher PN Ratings.

Originally designed for municipal requirements (PN16 pipes), the flange system is now standard on the range of Rodney Industries' Poly Footvalves, Leaf and Lint Strainers and is appearing on more and more Suction Lines, addressing the bore size issues so critical to flow velocities.

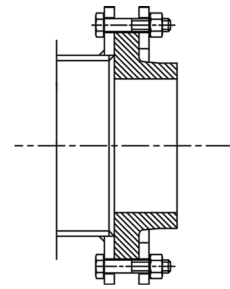
MAXI STUB GUIDE

Flange vs Nominal Bore Size		Polyethylene Pipe Sizes to suit MAXI Stub	Standard Reference of Typical Pipes ie. PVC S1&S2, Steel, Ductile
inch	mm		
3"	80	90 / 110	80
4"	100	125 / 140	100
5"	125	140 / 160	125
6"	150	180 / 200	150
8"	200	225 / 250	200
9"	225	250 / 280	225
10"	250	280 / 315	250
12"	300	355	300

BENEFITS

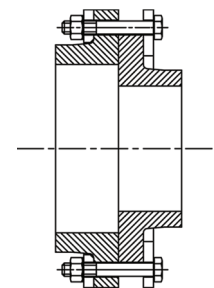
- Full nominal bore at high pressure ratings on any flange size.
- No spacers required for butterfly valve function.
- Full sealing face with full backing flange support.
- No deformation of stubs or backing rings.
- Backing rings captive by welds.
- Standard pressure rating of PN16/SDR11 up to 375mm available; others available on request.
- Suitable for butt welding or electrofusion.

THE DIFFERENCE



CONVENTIONAL POLY STUB FLANGE

Steel Flange to Conventional Poly Stub Flange and Backing Ring (Table D)



MAXI STUB FLANGE & BACKING RING

MaxiStub Flange & Backing Ring to Conventional Poly Stub Flange & Backing Ring (Table D)

MAXI STUBS



NOTE:
Standard Maxi Stub - SDR 11 PE100 drilled to suit Table D backing ring. Other sizes available upon application.

Maxi Stub Short Spigot

Pipe Ø	Size		OD	Code	Price
	inches	mm			
125	4	100	215	MX412511D	44.60
160	5	125	225	MX516011D	74.40
180	6	150	280	MX618011D	81.50
200	6	150	280	MX620011D	160.50
225	8	200	335	MX822511D	181.60
250	8	200	335	MX825011D	195.60
280	9	225	370	MX928011D	231.30
280	10	250	405	MX1028011D	237.60
315	10	250	405	MX1031511D	244.00
355	12	300	455	MX1235511D	313.30



Maxi Stub Long Spigot Suitable for Electrofusion or Buttwelding

Pipe Ø	Size		OD	Code	Price
	inches	mm			
125	4	100	215	MX412511DEF	126.30
180	6	150	280	MX618011DEF	115.30
250	8	200	335	MX825011DEF	358.50
315	10	250	405	MX1031511DEF	319.70
355	12	300	455	MX1235511DEF	469.50



Backing Ring to Suit Maxi Stub

Backing Ring	Size		Pipe	Code	Price
	To Suit Maxi	mm			
mm	inches	mm			
100	4	125	BRX4140D	44.60	
125	5	160	BRX5160D	59.30	
150	6	200	BRX6200D	74.40	
200	8	250	BRX8250D	109.00	
225	9	280	BRX9280D	344.60	
250	10	315	BRX10315D	126.30	
300	12	355	BRX12355D	167.50	



Maxi Stub Assembly complete with Stainless Steel 316 Backing Ring

Pipe Ø	Size		OD	Code	Price
	inches	mm			
125	4	100	215	MX412511EFASSY	156.50
180	6	150	280	MX618011EFASSY	230.60
200	6	150	280	MX620011EFASSY	492.00
225	8	200	335	MX822511EFASSY	689.70
250	8	200	335	MX825011EFASSY	485.20
280	9	225	370	MX928011EFASSY	766.60
315	10	250	405	MX1031511EFASSY	727.30
355	12	300	455	MX1235511EFASSY	898.00

DUCTILE IRON PIPE

DUCTILE IRON PIPE

DUCTILE IRON PIPE

At Rodney Industries we now offer a range of Ductile Iron Pipe.

Lengths can be manufactured to suit job requirement with the following DN sizes available:

- DN100
- DN150
- DN200

With a bitumen coating for long term corrosion resistance our pipe is manufactured to Flange Table AS4087 PN 16 standard.





Rodney Industries

TRUCK FILL STANDPIPE



FEATURES

- Manufactured to your requirements
- Heavy duty design
- Hot dipped galvanized
- Component lifting points
- Ease of assembly
- Easy to transport





Rodney Industries

RODNEY INDUSTRIES

19 Valente Close,
Chermside QLD 4032
Phone: +61 7 3624 0300



Connect with Us



Proudly a division of

Vinidex
by aliaxis