



**Rodney  
Industries**

A Division of Vinidex Pty Limited

# CHANNEL GATES



 **Rodney Industries**  
A Division of Vinidex Pty Limited

Phone: 07 3624 0300  
Email: [sales@rodneyind.com.au](mailto:sales@rodneyind.com.au)  
Web: [www.rodneyind.com.au](http://www.rodneyind.com.au)





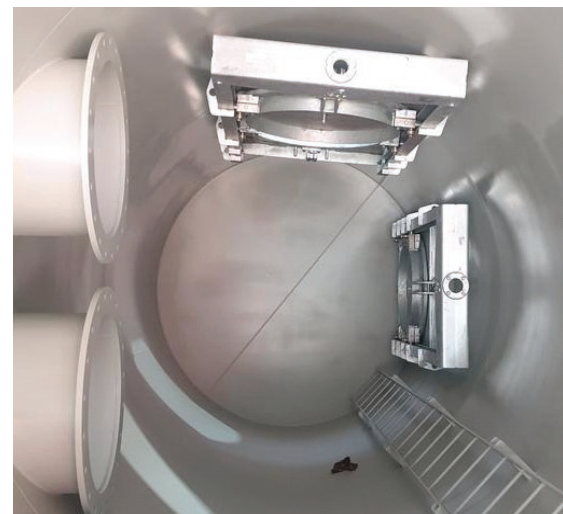
## FOR CONTROL YOU CAN COUNT ON, CHOOSE RODNEY INDUSTRIES' GATES

For more than 30 years we at Rodney Industries have been supplying the Australian market with our range of Channel Gates.

We understand the importance of quality, durability and performance and that is why we offer a range of Channel Gates designed to offer years of trouble free service.

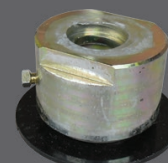
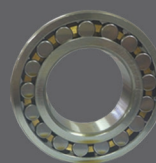
Our Channel Gates are designed and manufactured in Brisbane, Queensland, offering the following features:

- Fully galvanized steel construction.
- Manual reduction gear box and hydraulic available.
- Negative and positive head capable (on or off seat).
- Wide variety of fitting methods, ie. Weld on, grout in, rubber seal, Pro Pipe socket, flange etc.



## SPARE PARTS ON HAND

Spare parts are readily available for our Channel Gates; from the seals all the way to the axle roller. If your customer requires a part urgently, we can ship direct to them to speed up the process.



# HOW TO CHOOSE THE RIGHT CHANNEL GATE

*Need a Channel Gate but unsure as to which Gate will best suit your project requirements? The following is a breakdown of sizes and options available throughout our Channel Gate Range.*

## GATE SIZE

We understand that not every installation is the same, and it is for that reason, we have one of the largest ranges of Channel Gates available.

- 450mm
- 500mm
- 600mm
- 750mm
- 900mm
- 1050mm
- 1200mm
- 1350mm
- 1500mm
- 1650mm
- 1800mm

## HOW WILL IT BE ATTACHED?

Rodney Industries' Channel Gates can be supplied with standard or special spigots to enable a number of installation methods.

- Grout in Spigots to suit concrete pipes and head walls.
- Weld on Spigots to suit steel pipe or tanks
- Flanged Spigots to suit flanged pipes.
- Compression rings to suit poly, steel or concrete pipe end fittings.

## MAST & MAST EXTENSIONS

Mast and Mast Extensions are fitted so that the hand wheel height is at a suitable operating level.

Our Channel Gates can be manufactured to your mast requirements.

## HEAD SIZE

The maximum working pressure of the standard Channel Gate is referred to as head pressure above the valve.

This measurement is taken as the height from the pipe centre of the valve spigot to the surface of the water storage.

Rodney Industries valves have separate models to suit the following maximum head pressures:

- 2 Mtr
- 4 Mtr
- 6 Mtr
- 10 Mtr

## HEADWALL MOUNTING BRACKETS

Headwall mounting brackets are available as an option for all gates and are advised for compression seal spigot installations. Flange spigot hole positions can vary to different flange types and ratings and should be checked to ensure that this orientation can be achieved.

The Channel Gate should not be stressed or strained back to an uneven surface as this can affect its ability to seal, headwall mounting brackets are designed to be used with nuts and washers on both sides of the bracket to keep the gate stress free.

## FURTHER OPTIONS

Further options for consideration are as follows:

- Mast Stabiliser Brackets
- Gate Open Indicator
- Turning Mechanism: Handle or Hydraulic Cylinder
- Gear Reductions (Only when head > 4mtrs on 1500mm to 1800mm sizes).





# OPERATION

Depending upon the installation and operation requirements for the Channel Gate, Manual operation or Hydraulic Cylinders are available throughout the range.

*The 10 Meter Channel Gate is also available with Gearbox.*



# INSTALLATION

To achieve the most suitable installation needed for your project, Rodney Industries can supply your Channel Gate with either a standard spigot or with a special spigot. For example:

- Grout in Spigots to suit concrete pipes and headwalls.
- Weld on Spigots to suit steel pipe or tanks.
- Flanged Spigots to suit flanged pipes.
- Compression rings to suit poly, steel or concrete pipe end fitments.

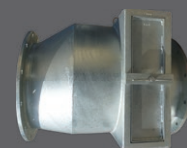


# DESIGNED TO ASSIST

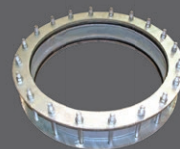
As with any installation, there are other components that are required to complete the job. That is why we offer a range of Eco Check Valves, Gibault Joints and Head Wall Brackets which can be modified to suit your needs.



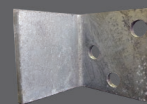
Eco Check Valve



Eco Check Valve  
With Hatch



Gibault Joints



Head Wall Bracket