



Rodney Industries

# FOOTVALVES

Galvanised, Stainless Steel,  
Polyethylene, Squat Style

2025





# QUALITY, RANGE AND VALUE

---

Galvanised – Stainless Steel – Polyethylene

For more than 40 years we at Rodney Industries have been supplying the Australian market with Footvalves.

The Rodney Industries footvalves are designed to offer years of trouble free service with their galvanized, stainless steel or polyethylene construction.

Footvalves are used to prevent reverse flow and to maintain prime within the pump when fitted to the foot or end of the suction pipe of the pump set.

The main components of the footvalve consist of body, flap, seat and strainer.

The swing flap pivots freely on the hinge blocks. Its movement is restricted with stops preventing damage to the inside walls of the valve.

A durable EPDM seal is fitted to the flap for reliable service and the flap assembly is of a self levelling design to allow for wear within the seal.

A quick release lever is fitted to the valve and can be remotely activated by a cable to release the water within the valve.

---

# CONTENTS

01.  
GALVANISED  
FOOTVALVES

03.  
STAINLESS STEEL  
FOOVALVES

05.  
POLYETHYLENE  
FOOVALVES

07.  
SQUAT STYLE  
FOOTVALVES

09.  
FAB  
CREATIONS





## FOOTVALVE RANGE



Looking for an inexpensive footvalve option where quality and reliability are still key features? Look no further than the Rodney Industries' range of galvanized Footvalves.

Available from 3 inches right through to 30 inches and boasting extremely efficient flow characteristics through the entire range, our Galvanized Footvalves set the industry standard.

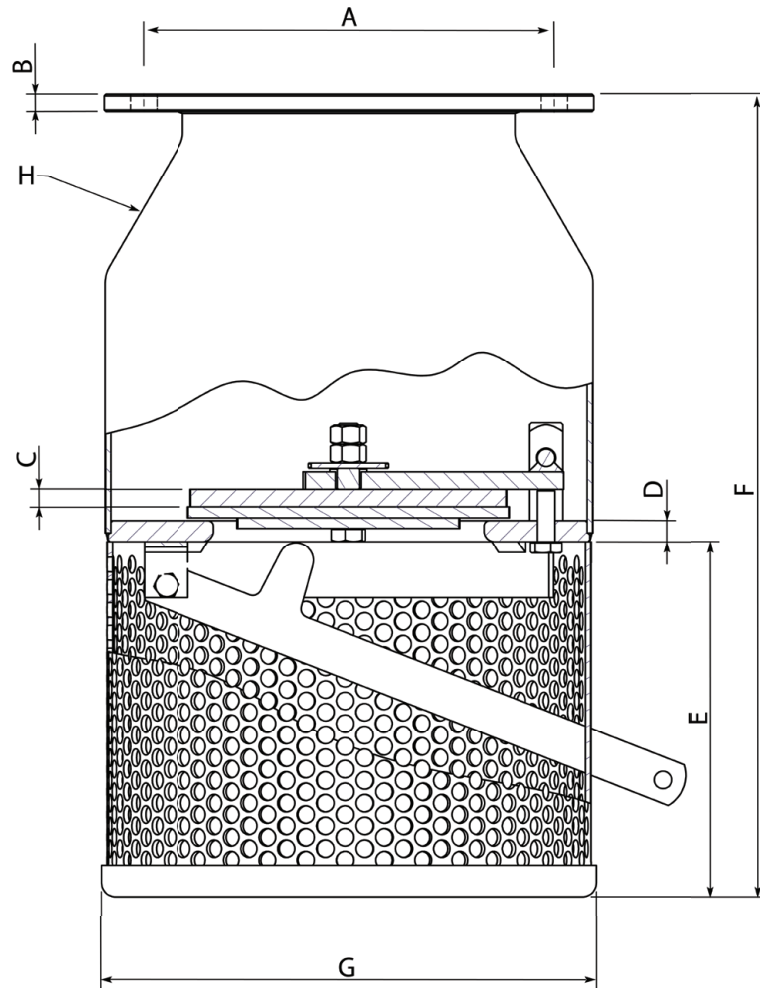
# GALVANISED FOOTVALVES





# SPECIFICATIONS

## GALVANISED FOOTVALVES



Size		Code	A mm	B mm	C mm	D mm	E mm	F mm	G mm	H mm	Weight Approx kgs
mm	Inches										
80	3	6515	146	10	10	12	178	372	188	3	10
100	4	6525	178	10	10	12	178	393	220	3	11.7
125	5	6535	210	10	10	12	203	448	258	3	16.2
150	6	6545	235	10	10	12	203	459	283	3	18.5
200	8	6565	292	12	12	16	278	595	340	3	30
250	10	6585	356	12	12	16	312	676	405	3	42
300	12	6595	406	12	12	16	364	776	455	3	53
350	14	6590	470	16	16	20	408	897	525	3	82.5
375	15	6605	495	16	16	20	432	920	550	2	86.5
400	16	6615	521	16	16	20	470	975	585	2	98.4
450	18	6625	584	20	20	25	505	1105	645	3	139
500	20	6635	641	20	20	25	555	1180	710	3	178
600	24	6645	756	20	20	25	665	1390	830	3	246
660	26	6647	813	20	20	25	725	1510	875	3	280
750	30	6650	927	25	20	32	820	1660	995	6	500

FOOTVALVE RANGE



# STAINLESS STEEL FOOTVALVES

Does your project require the benefits of Stainless Steel? Strong, durable and corrosion resistant? Look no further than our range of Stainless Steel 316 Footvalves available in 3 inches through to 26 inches.

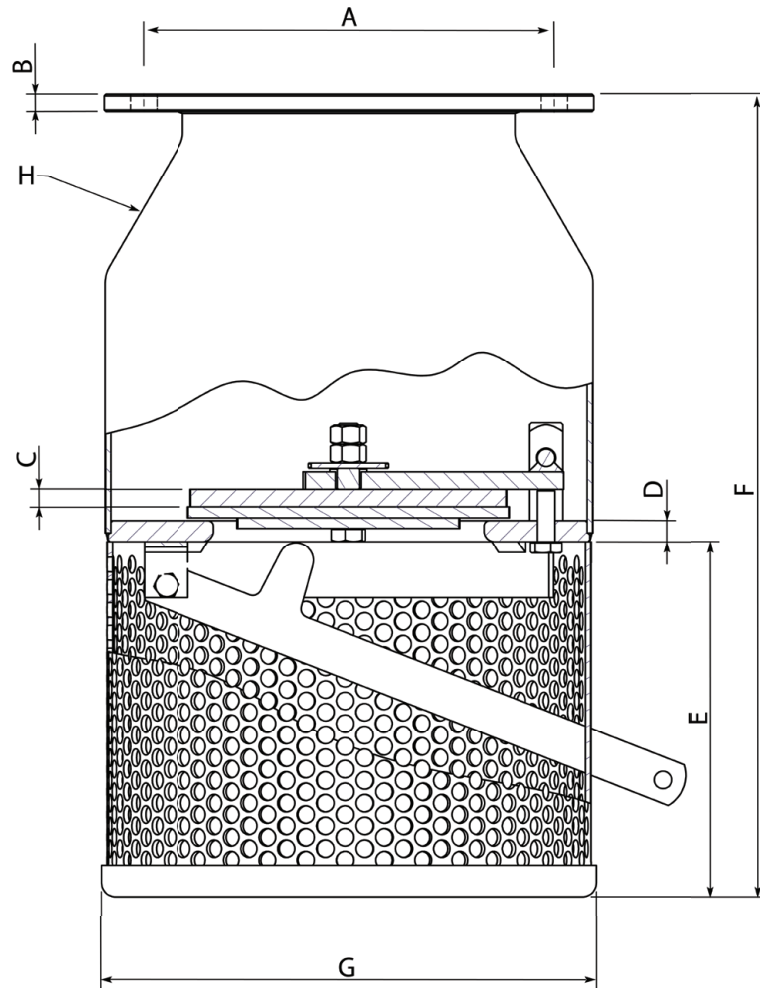
Apart from the Footvalve's Clack Rubber, all components are manufactured using Stainless Steel - even the fastenings!

Material certificate for range available upon request.



# SPECIFICATIONS

## STAINLESS STEEL FOOTVALVES



Size		Code	A mm	B mm	C mm	D mm	E mm	F mm	G mm	H mm	Weight Approx kgs
mm	Inches										
80	3	6515SS316	146	10	10	12	178	372	188	3	10
100	4	6525SS316	178	10	10	12	178	393	220	3	11.7
125	5	6535SS316	210	10	10	12	203	448	258	3	16.2
150	6	6545SS316	235	10	10	12	203	459	283	3	18.5
200	8	6565SS316	292	12	12	16	278	595	340	3	30
250	10	6585SS316	356	12	12	16	312	676	405	3	42
300	12	6595SS316	406	12	12	16	364	776	455	3	53
350	14	6590SS316	470	16	16	20	408	897	525	3	82.5
375	15	6605SS316	495	16	16	20	432	920	550	2	86.5
400	16	6615SS316	521	16	16	20	470	975	585	2	98.4
450	18	6625SS316	584	20	20	25	505	1105	645	3	139
500	20	6635SS316	641	20	20	25	555	1180	710	3	178
600	24	6645SS316	756	20	20	25	665	1390	830	3	246



# POLYETHYLENE FOOTVALVES

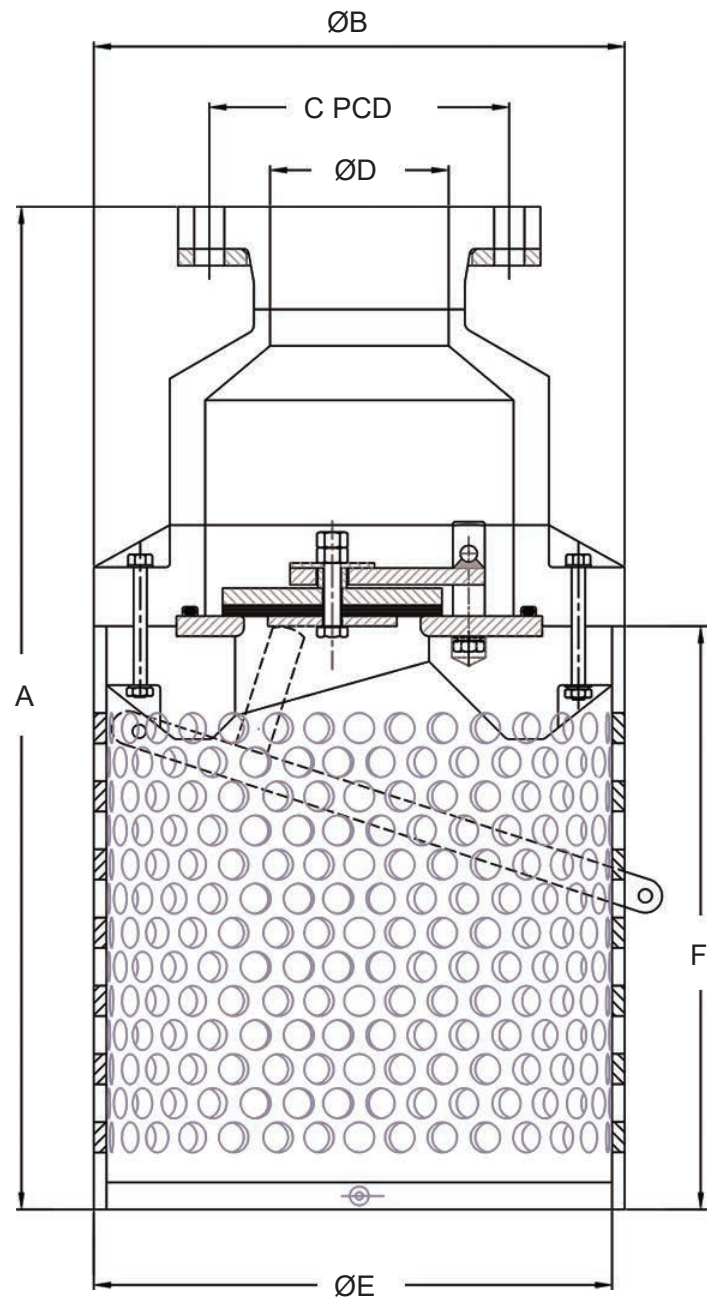
For those who have never considered a Polyethylene Footvalve, consider this:

- Available from 4 inches to 12 inches.
- Full Polyethylene body offers a lightweight corrosion resistant strong frame.
- G10 Composite \ Stainless Steel 316 internals and fasteners.
- Extremely efficient flow characteristics through the entire range.
- Full bore Maxi Stub gives the benefit of nominal ID to fit a standard backing ring.



# SPECIFICATIONS

POLYETHYLENE FOOTVALVES



Size		Code	General Dimensions					
mm	inches		A	ØB	C PCD	ØD	ØE	F
100	4	FVPS100	590	300	178 (4")	106	300	345
125	5	FVPS125	700	350	210 (5")	130	350	370
150	6	FVPS150	700	350	235 (6")	162	350	370
200	8	FVPS200	820	440	292 (8")	203	440	450
250	10	FVPS250	950	545	356 (10")	255	545	550
300	12	FVPS300	950	600	406 (12")	302	600	565

# SQUAT STYLE FOOTVALVES

Need a footvalve but the water level is low? No problem! Our range of Squat Style Footvalves are sure to be just what you need.

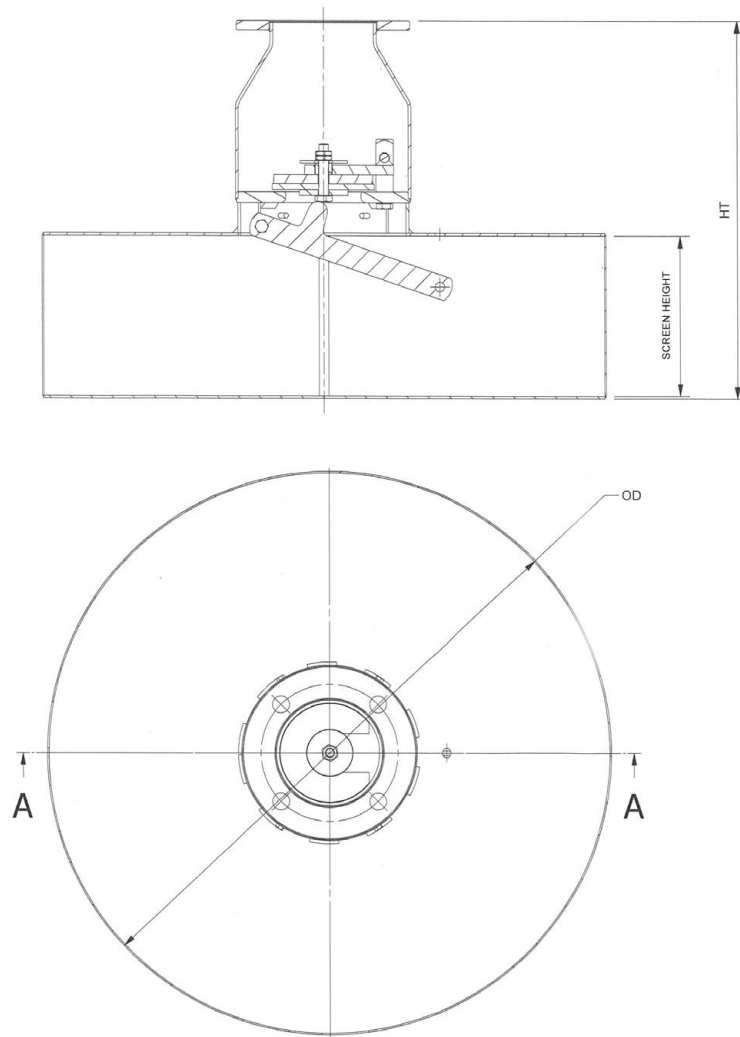
If our standard range not exactly what you need in the way of size, our Fabrication abilities at Rodney Industries means that we can customise the squat footvalve to have the correct diameter and screen height to suit your job's requirements.





# SPECIFICATIONS

## SQUAT STYLE FOOTVALVES



Squat Style Footvalves (Table D)

mm	Inches	DIA (mm)	Screen Height (mm)	Code
100	4	600	155	6525SQ600
100	4	900	155	6525SQ900
125	5	600	170	6535SQ600
125	5	900	170	6535SQ900
150	6	600	170	6545SQ600
150	6	900	170	6545SQ900
200	8	600	170	6565SQ600
200	8	900	170	6565SQ900
200	8	1200	170	6565SQ1200
250	10	900	170	6585SQ900
250	10	1200	170	6585SQ1200
300	12	900	170	6595SQ900
300	12	1200	170	6595SQ1200



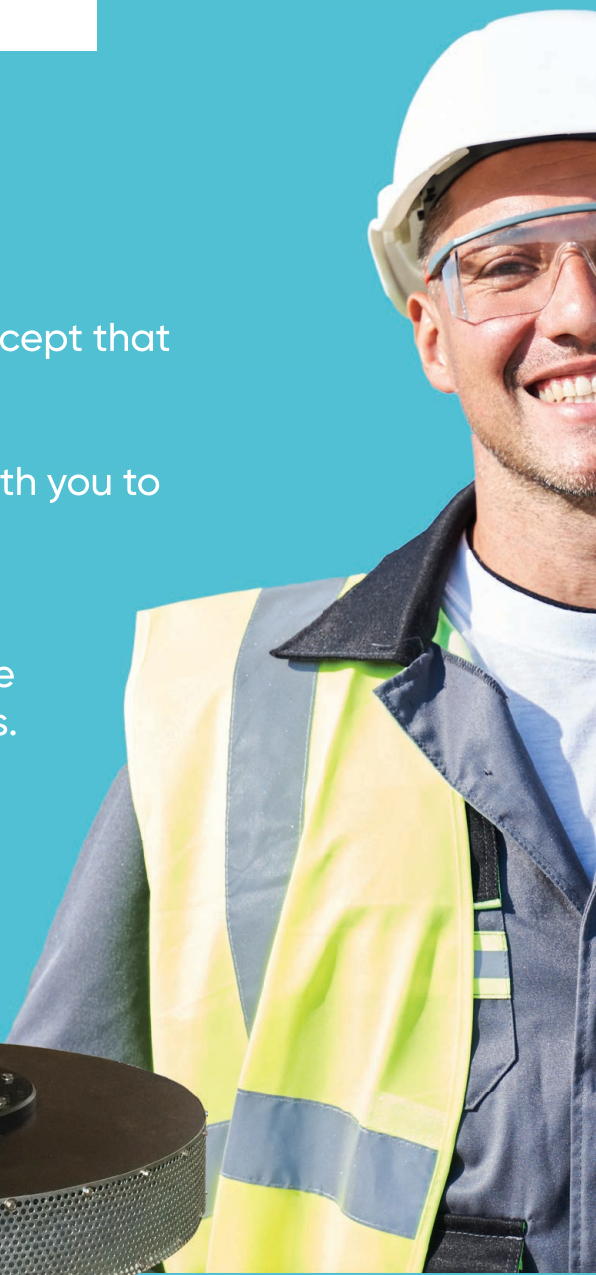


# When Standard just won't do.

Do you and your customer have a design concept that you need to bring to life?

Our in house Draftsman can work together with you to create the solution you need.

With our knowledge and experience in metal and polyethylene fabrication, you can be sure we can fabricate the footvalve for your needs.











Rodney Industries

Phone: 07 3624 0300

Email: [sales@rodneyind.com.au](mailto:sales@rodneyind.com.au)

Web: [www.rodneyind.com.au](http://www.rodneyind.com.au)

